

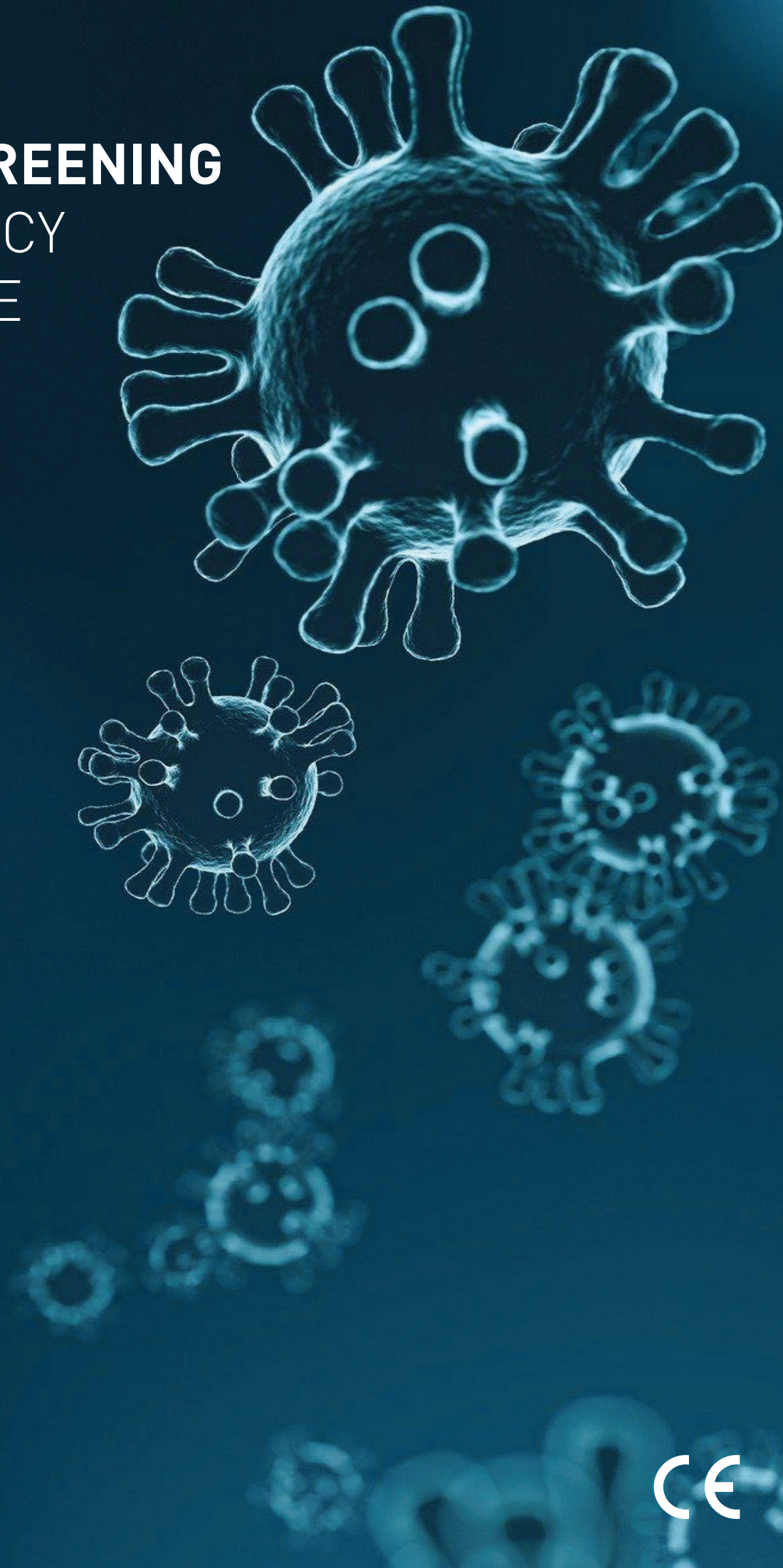
CRT

Covid-19 Rapid Test



Oncosem

COVID-19
RAPID SCREENING
EMERGENCY
RESPONSE
TEST KIT



OUR PRODUCT



10-15 MINUTES DETECTION TIME

Just one finger prick of blood



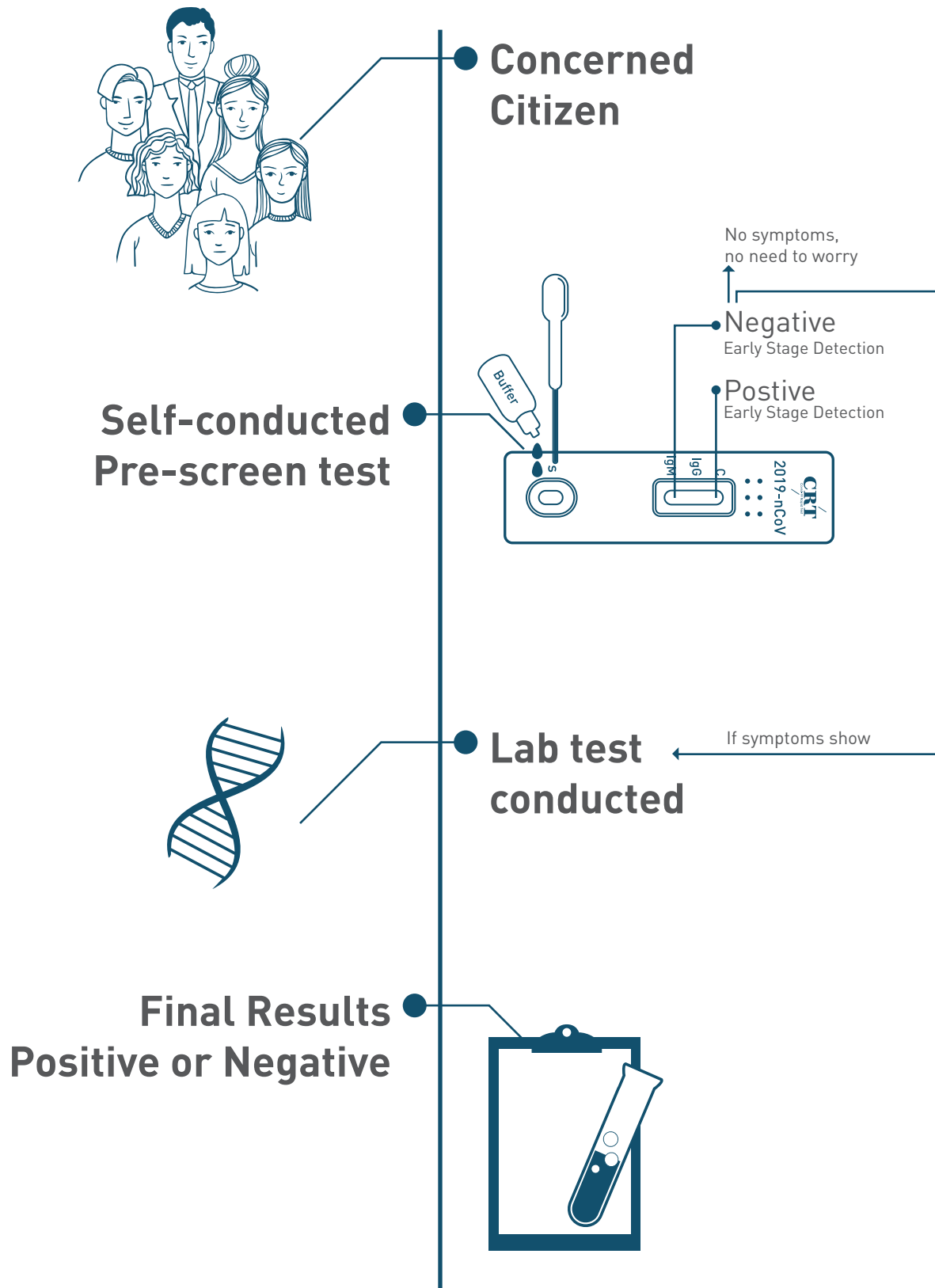
ONLY

Customs
Insurance
Shipping
Freight Excluded
Only Port Delivery if Turnkey preferred

HOW IT WORKS?

PRE-SCREENING

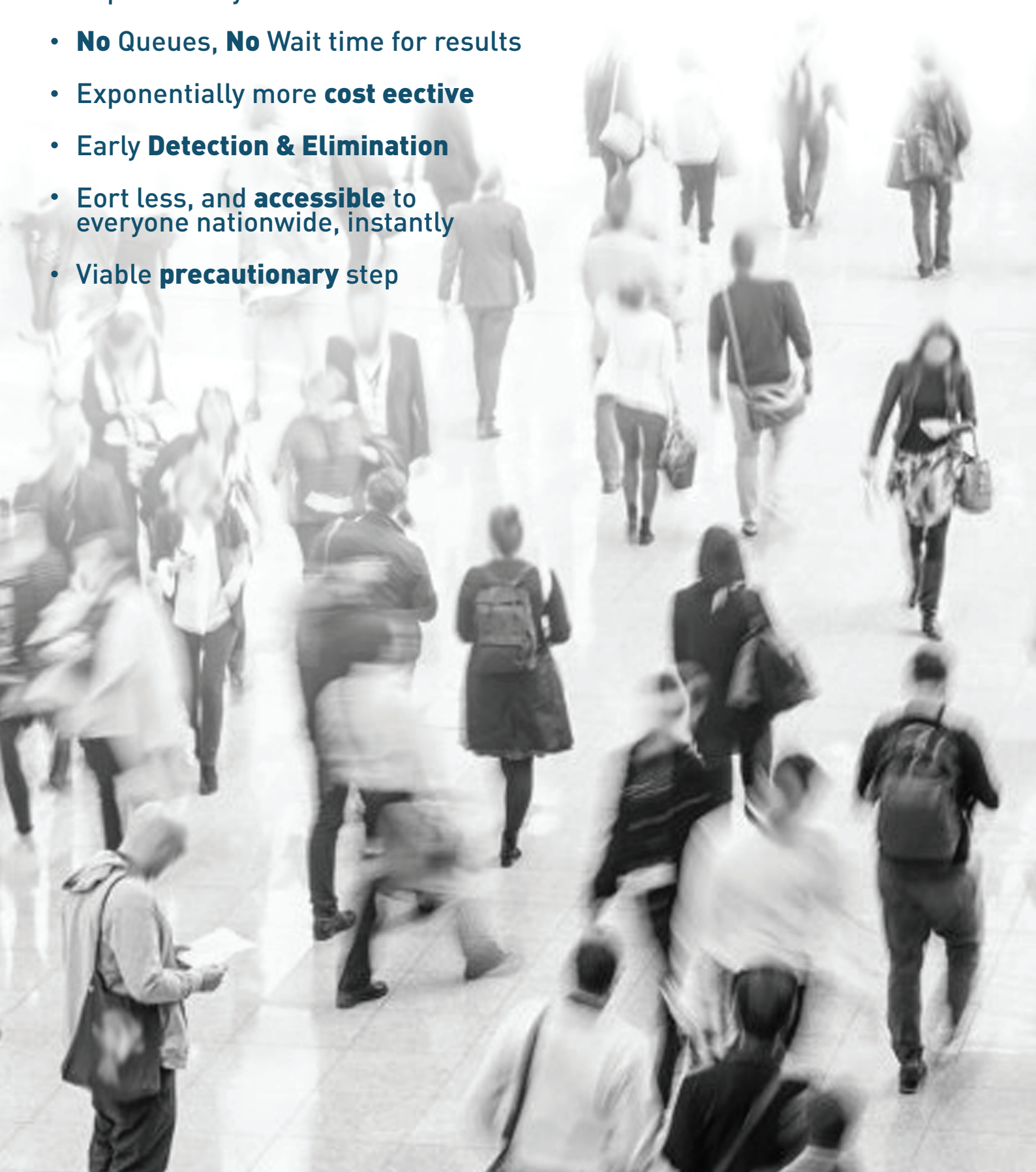
European CE certified



BENEFITS

of pre-screening

- Exponentially **faster**
- **No** Queues, **No** Wait time for results
- Exponentially more **cost effective**
- Early **Detection & Elimination**
- Eort less, and **accessible** to everyone nationwide, instantly
- Viable **precautionary** step



HOW IT WORKS?

10-15 MINUTES Detection Period

Easy operation without requirement of any Doctor or Professional Nurse

No special equipment storage and transportation conditions required

Works with whole blood, serum, and plasma

Tests for 2 antibodies IgM and IgG simultaneously

Instant Field screening

Step.1 Drop of whole blood



Step.2 Drop of buffer

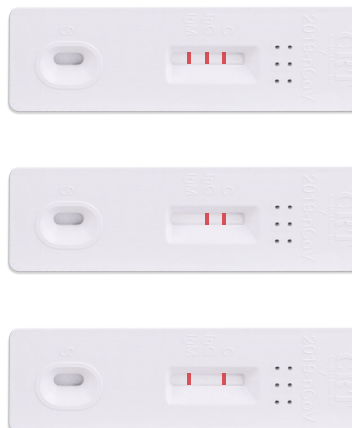


Step.3 Wait for result

INVALID



POSITIVE



NEGATIVE



98 %+ACCURACY

European CE certified

HOW IT WORKS?



CRT

Covid-19 Rapid Test



Results

Interpretation

IgM, IgG

Suspected recent infection of 2019-nCov

IgM, IgG

Suspected recent infection of 2019-nCov

IgM, IgG

Patient Suspected to have past infection

IgM, IgG

Antibody for COVID-19 Virus undetected OR low IgG/IgM level below limit of detection

DIAGNOSTIC PROCESS

It is widely accepted that IgM provides the first line of defence during viral infections, followed by the generation of adaptive, high anity IgG responses for long term immunity and immunological memory. Therefore testing of COVID-19 IgM and IgG antibodies is an eective method for the rapid diagnosis of COVID-19 infection. Furthermore, detection of COVID-19 IgM antibodies tends to indicate a recent exposure to COVID-19, whereas detection of COVID-19 IgG antibodies indi - cates a later stage of infection. Thus, this combined antibody test could also provide information on the stage of infection.

